

LED Linear Highbay
30-180W

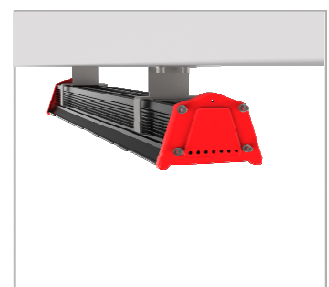
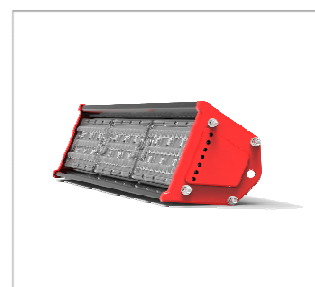
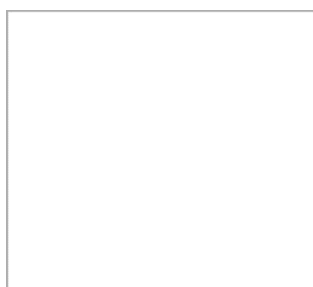
Change



LED linear lighting is quite different from other luminaires; it needs specialized rails to form the LED linear lighting system. The rails integrate all the linear lights and become a trunking system. As the perfect replacement for traditional linear and fluorescent tubes in the market. Because of its special efficiency and multi-function capabilities, it can be used in specialty applications. color options - white, black, and silver

Applications: Supermarket, Office, warehouse, and other commercial and retail lighting applications

Wattage	30W/60W/90W/120W/150W/180W
Luminous Flux	30W: 4500Lm 60W: 8100Lm 90W: 12150Lm 120W: 16200Lm 150W: 20250Lm 180W: 24300Lm
Kelvin	3000K, 4000K, 5000K
Input Voltage	100-240/100-277VAC 50/60Hz PF 0,93
Colour Rendering Index	>70 CRI>80 Optional
IP-Code	IP65
Driver	Meanwell
Light Source	Nichia chip
Dimmable	Optional
Material	ALU alloy+ Pc lens
Beam Angle	30°x70°, 60°x90°, 120°
Dimensions	30W: 280x137x102mm 60W: 486x137x102mm 90W: 718x137x102mm 120W: 948x137x102mm 150W: 1178x137x102mm 180W: 1718x275x102mm
Working Temp.	-30~+50°C
Bracket	Optional
Cable grippers	Optional
Cord AU/EU/US	Optional
Lifespan	50.000h
Warranty	5 Year
Certification	ISO9001: 2008, CE, CB, SAA, RoHS, UL, DLC, ErP



All transactions with LED Flatlight BV are subject to our general terms of trading, Copies are on request. All specifications are subject to change without notice.