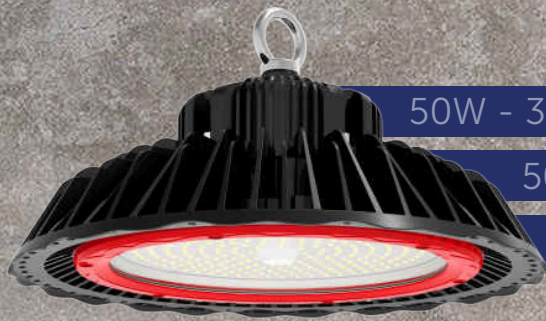




Titan Highbay Serie

50W-300W | 140LM/W-160LM/W | 3000K-5000K

UTILITY | INTERIOR | OFFICE | EMERGENCY | INDUSTRIAL | SPECIAL PROJECTS | RETAIL | AGRICULTURAL | OUTDOOR | CUSTOM MADE SOLUTIONS | SMART LICHTING SOLUTIONS



50W - 300W

5000K, 4000K, 3000K

140Lm/W, 150Lm/W, 160Lm/W

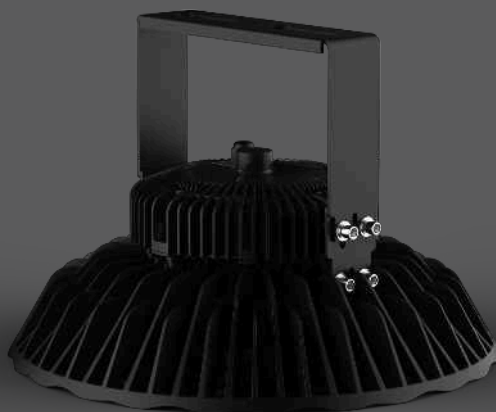
UGR (**Unified Glare Rating**) is a metric that is used to calculate level of glare in certain applications. Standards have been set for specific working environments to ensure the UGR is at the correct level for the room and doesn't interfere with general productivity.

UGR<19



Certifications

Our Highbay's are designed for a wide range of industrial and commercial applications. Replacing traditional HID, HPS and fluorescent highbay fixtures. Our products are made of quality parts and have a high energy saving level. We think quality is very important so we always make sure our products are tested and have the right certificates.

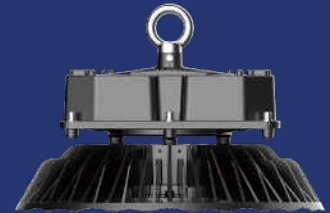
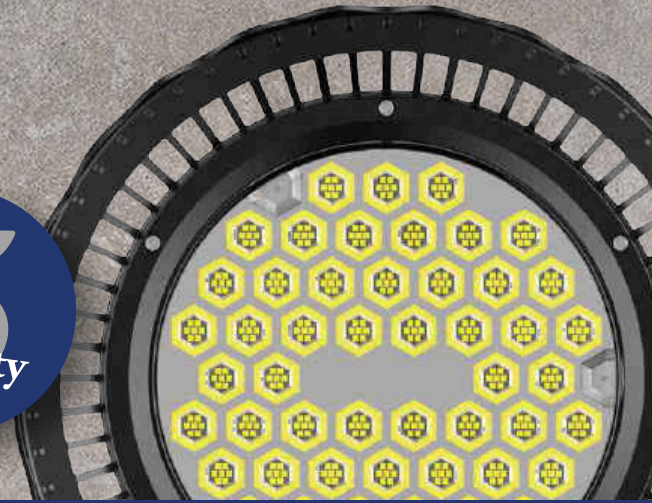


Multiple installations

There are multiple ways to install the Titan Highbay: Here are some examples: loop hanging, ceiling mounting, wall mounting, pipe mount. There's also a lot of different options & accessoires, like a PC reflector with cover. (See picture above)

- Meanwell driver and Nichia chips
- 90% Energy saving replacement
- Free maintenance
- Intelligent control available

5
 Years
 warrenty



Wattage:
 50W, 70W, 90W
Dimensions:
 Ø264x171mm
Luminaire Net Weight:
 3.1±0.3kg

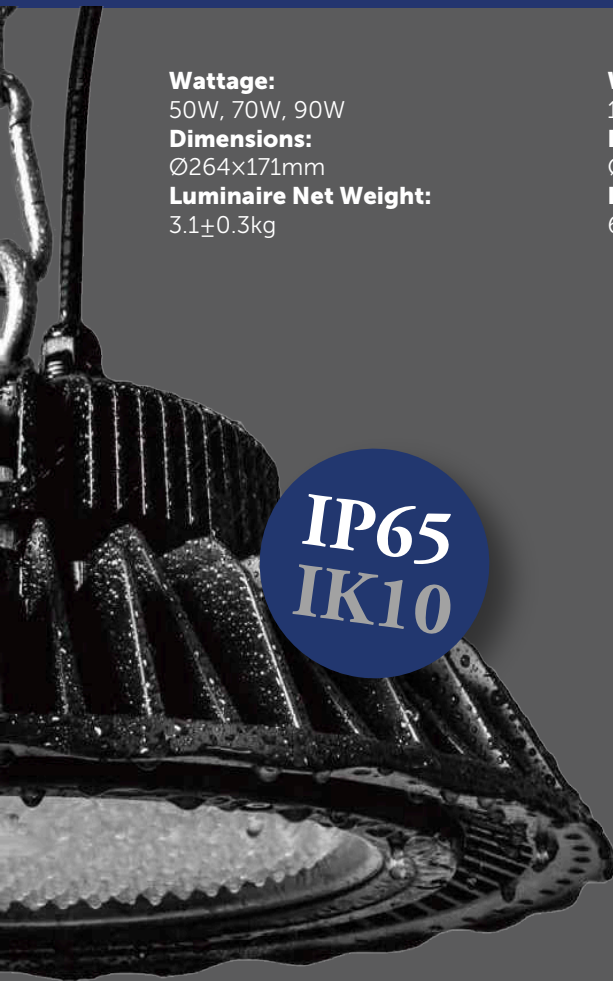
Wattage:
 100W, 120W, 150W, 200W, 240W
Dimensions:
 Ø383x201mm
Luminaire Net Weight:
 6.7±0.3kg

Wattage:
 300W
Dimensions:
 Ø383x254mm
Luminaire Net Weight:
 8.7±0.3kg

IP65
IK10

Replacement list

Wattage	Lumen	Replaces
50W	6250Lm	150W HID
70W	8750Lm	150W HID
90W	12600Lm	200W HID
100W	16000Lm	250W HID
120W	19200Lm	400W HID
150W	24000Lm	400W HID
200W	32000Lm	600W HID
240W	36000Lm	600W HID
300W	45000Lm	1000W HID



Seeing is believing

Do you want to see it with your own eyes? Want to see our Titan highbays on location? Of course you can! Come to our showroom and factory floor where we can demonstrate our Highbays.



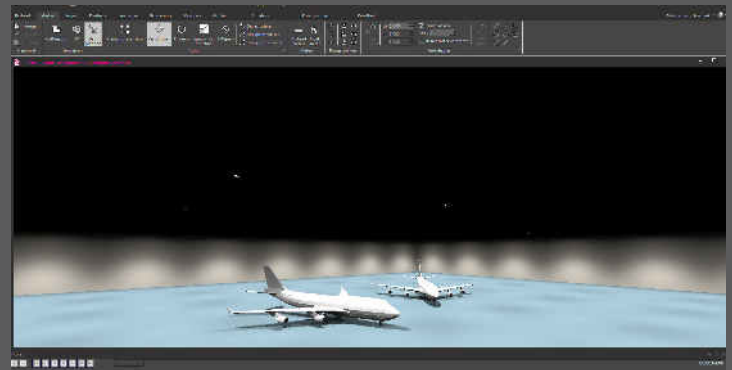
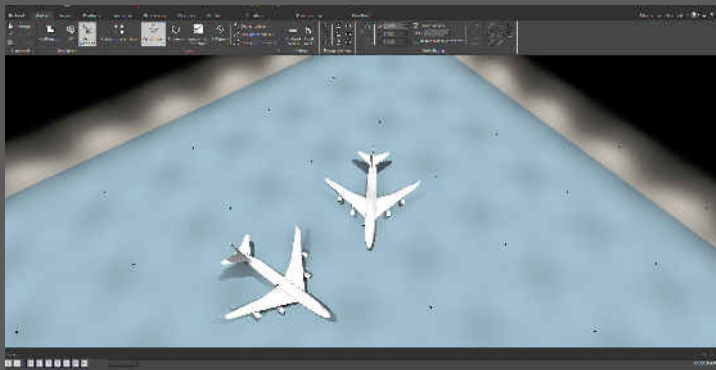
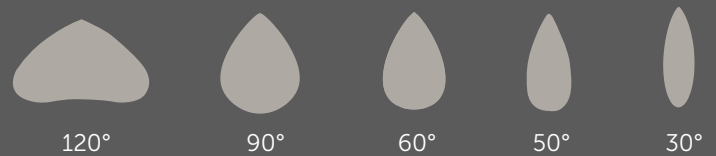
Color Rendering Index

(CRI) is a way to measure a light source's distinctive attributes. It is an assessment of how the light source shows object colors "naturally" when compared to a familiar basis of reference, either incandescent light or daylight. Our Titan has a standard CRI of 70 or 80, CRI93 is an extra option

Professional lighting plan

How many highbays do i need? With an professional lighting plan we can show you exactly how many high bays you need. from a small place to a gigantic factory hall. (Or as show below a aircraft hangar at Schiphol airport.) We can show you which type of high bays you need. With the right beam angle & wattage and of course the right color temperature.

Different Beam angles available:



Lux is a unit used to measure the intensity of light hitting a surface, typically a wall or floor in a lighting design. One lux is equivalent to one lumen per square meter. They differ from lumens, which measure the brightness of the light source. here a short list for Highbays:

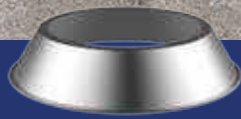
Storage and stock	100Lux
Gym/Sport	300Lux
Sport venue	500Lux
Factory hall	500Lux
Airplane hangar	500Lux
Car industry	1000Lux

Titan a smart LED Highbay

Compatible with multiple intelligent systems, such as:
DALI Dimmabl, Daylight Sensor, Microwave Sensor,
PIR Sensor, ZigBee Control, Wireless



Anti Glare Reflector



Reflector 90°



Reflector 110°



Reflector 65°



New Titan
Highbays

Old HID
Traditional
Highbays